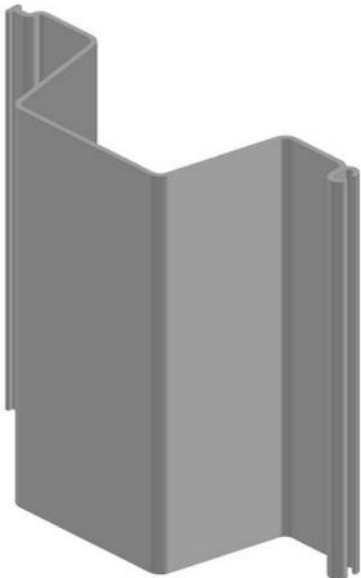


Strength Rating (M)	Lbs-Ft/Ft	3,930	Modulus of Elasticity (E)	psi	380,000
Allowable Shear (V)	Lbs/Ft	2,770	Co-Extruded		Yes
Thickness (t)	inches	0.285	Section Depth	inches	8
Section Modulus (Z)	in <sup>3</sup> /ft	14.3	Section Width	inches	24
Moment of Inertia (I)	in <sup>4</sup> /ft	57.1	UV Stabilized		Yes
Ultimate Tensile Stress	psi	6,300	Standard	sheets/ bundle	20 & 10
Creep Limited stress	psi	4,000	Packaging		



The values shown are nominal and may vary. The information found in this document is believed to be true and accurate. No warranties of any kind are made as to the suitability of ESP sheet piling for particular applications or results obtained therefrom. Consult with a professional engineer and/or contractor as to the suitability of this product for your particular application.